

Museum Hours and Admission

MAY through SEPTEMBER

Weekdays, 9am-5pm Weekends, 10am-5pm

OCTOBER through APRIL

Tuesday-Saturday, 12am-4pm*

and by appointment

*beginning Fall 2007 winter hours will be extended to 10am-4pm

ANNUAL PASSES: available

Children 18 and under, AAM, MA & AASLH members admitted free of charge

Contact:

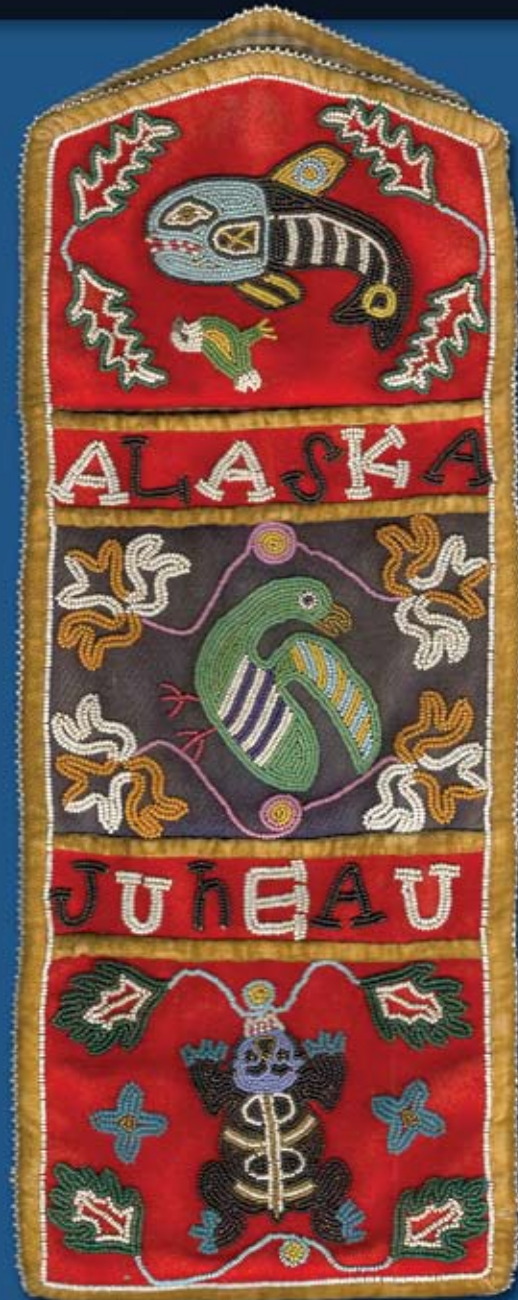
Phone: (907) 586-3572

Mailing address: 155 S. Seward St., Juneau, AK 99801

www.juneau.org/parksrec/museum/



The Juneau-Douglas City Museum is located at Fourth and Main Streets, next to the Alaska State Capitol and near the Governor's House. The Museum is within easy walking distance of downtown Juneau and is accessible to persons with disabilities.



Explore Juneau-Douglas history & culture
at our community museum

Step into Juneau's Golden Past

When Joe Juneau and Richard Harris pulled their boat onto the shore of the Auk Indian fish camp at the mouth of Gold Creek, they were in search of gold. Believing he was helping his people, Tlingit leader, Kawa.ée, led the two prospectors there from Sitka, and then up Silverbow Basin where they found the precious metal and staked their claims. The discovery became the first strike that resulted in the founding of an Alaskan town and eventually Alaska's Capital City — Juneau.

PHOTOS:

Cover: Beaded wallpocket, JDCM 2002.29.001

Clockwise this page:

Mining claim registration, courtesy

Alaska State Museum III-O-436;

Joseph Juneau, PCA 87-2369;

Kawa.ée, PCA 01-1155;

Richard Harris, PCA 87-2372;

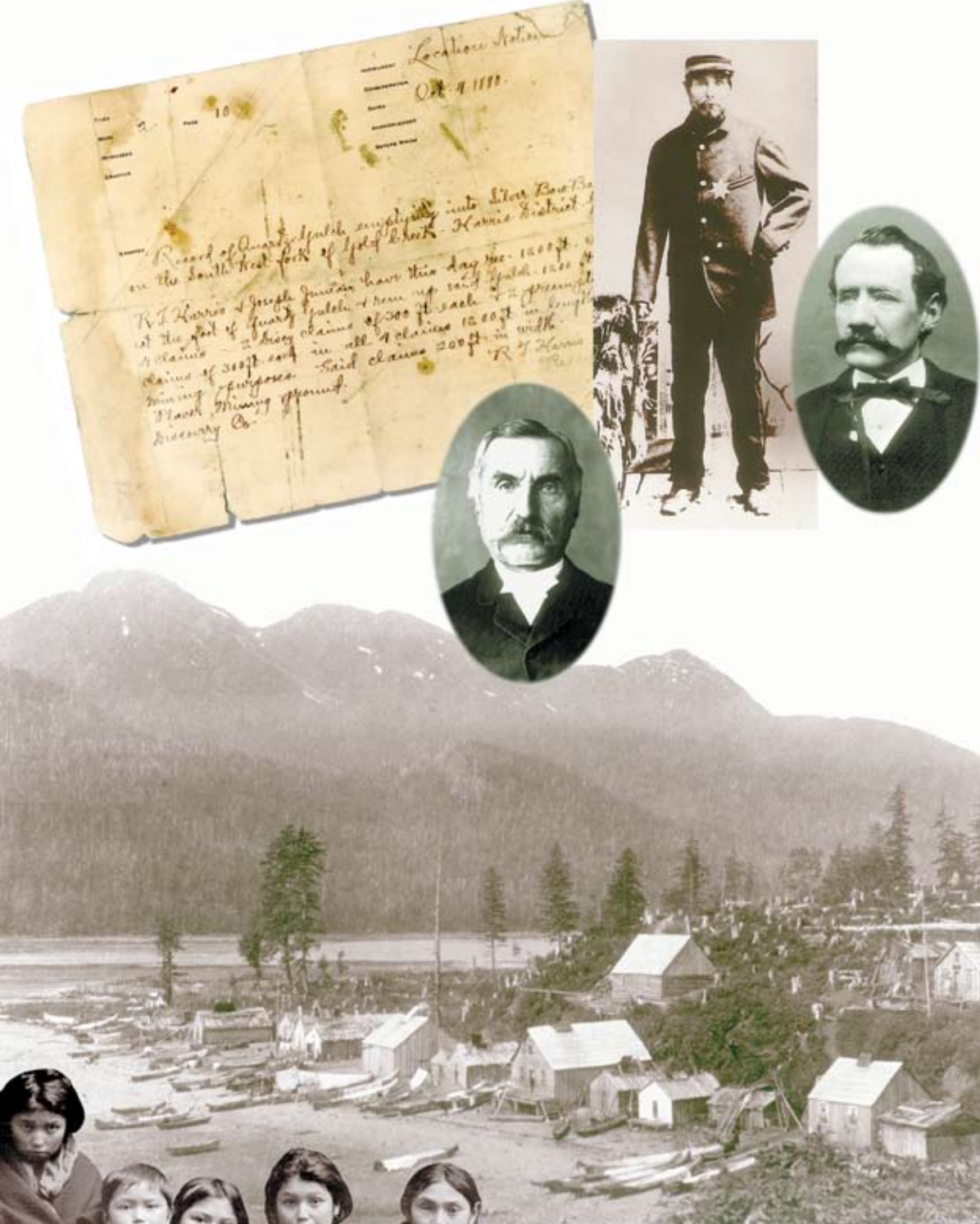
Native settlement, Juneau,

PCA 88-61;

Tlingit children, PCA 87-1071

Historical photos courtesy

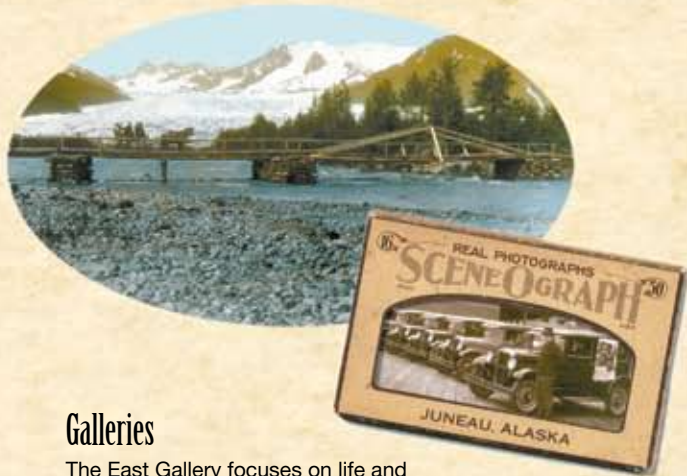
Alaska State Library Historical Collections, unless otherwise noted.



The Juneau-Douglas City Museum fosters among its diverse audiences an awareness of Juneau's cultural heritage, values, and community memory, so we may draw strength and perspective from the past, inspire learning, and find purpose for the future.



Juneau panorama, c.1916, PCA 87-1-4



Galleries

The East Gallery focuses on life and culture in the local Gastineau Channel area, including a 500-700 year old basketry-style fish trap and full scale replica. At the turn of the first century, Juneau had the largest gold producing industry in the world. This unique gold mining history is featured in the Leslie Murray gallery. The Politics, Personalities and Power Gallery highlights Juneau as Alaska's Capital City. Our Northeast Gallery is reserved for solo artist exhibitions and other changing exhibits. Our 8' X 5' relief map orients visitors to local topography, and a 25-minute historic video, *Juneau: City Built on Gold*, gives a glimpse into our community's past.



(above) Brotherhood Bridge, PCA 87-1887; Sceneograph with photo of Chevrolets, 1928, PCA 87-1025. (left) China Joe, PCA 14-84

Collections & Programs

As a public trust, the Juneau-Douglas City Museum collects, preserves, interprets, and exhibits materials that document the cultures and history of the Juneau and Douglas area. With a permanent collection of approximately 10,000 Juneau area artifacts, thanks in large part to community donations, the Museum provides the general public and researchers with a wealth of historic information. Research appointments are required. In addition to the Museum's collections and reference library, researchers are invited to access Digital Bob (www.juneau.org/parkrec/museum/forms/digitalbob/bobhome.php), an on-line searchable database of R.N. (Bob) De Armond's writings. De Armond is one of the region's pre-eminent historians.

Throughout the fall and winter, the Museum offers a variety of free programs as well as for-pay classes for children and adults. Educational tours for school groups, and use of the Juneau History Kit, are available for teachers and youth leaders free of charge. Please contact the Museum for scheduling. The gallery floor of the Museum is also available to rent for receptions. ADA accommodations are available upon request.

(above) Elizabeth Peratrovich, PCA 01-3294 (right) Salmon Derby, JDCM 88.37.3 (below) Princess Kathleen aground, 1952



Got History?

Knowledgeable volunteers answer questions and share insights about local history and modern day Juneau area sites and attractions. Professional staff give assistance on genealogical and local history research; appointments are strongly recommended. The Museum also administers the Juneau History Grant, an annual grant program that awards up to \$1,000 for projects that document, preserve, or improve access to the history of the Juneau-Douglas area.

Museum Grounds

Enjoy two totem poles in our small, beautifully landscaped park and view Alaska's Capitol building. The Museum building was constructed in 1951 as a library, the first in the state, and dedicated to Veterans of Foreign Wars. On this site on July 4, 1959, the first Alaska state flag was raised celebrating statehood. A 49-star flag still flies here. Both the building and statehood site are listed on the National Register of Historic Places.



Detail of "Harnessing of the Atom" totem pole



Statehood celebration, PCA 01.3.22e

Volunteer Opportunities

Museum volunteers are the backbone of the Juneau-Douglas City Museum and are instrumental in providing educational programs, extending open hours, visitor reception, and collection management. Year round opportunities for volunteers exist.



Museum Shop & Publications

Our Museum Shop sells books, commemorative centennial items, note cards and a variety of other Juneau history and museum related items and collectibles. Historic trail brochures and booklets help you follow in the footsteps of early residents and miners on historic trails, and explore the beauty of nature on Juneau's terrific trail system. Ask for a free copy of the *Historic Downtown Juneau* guide, which shows buildings on the National Register of Historic Places, totem poles and public art, and downtown Juneau Historic Sites. The guide is also available on-line at www.juneau.org/parkrec/museum/documents/JDCMhistoricguide06.pdf



Historic Resources Advisory Committee

The Historic Resources Advisory Committee (HRAC) promotes historic and cultural preservation within the Borough by advising the City and Borough of Juneau Assembly, Planning Commission, and city staff on preservation and Museum issues. Visit the committee's website at www.juneau.org/history, or call 907.586.0781.

