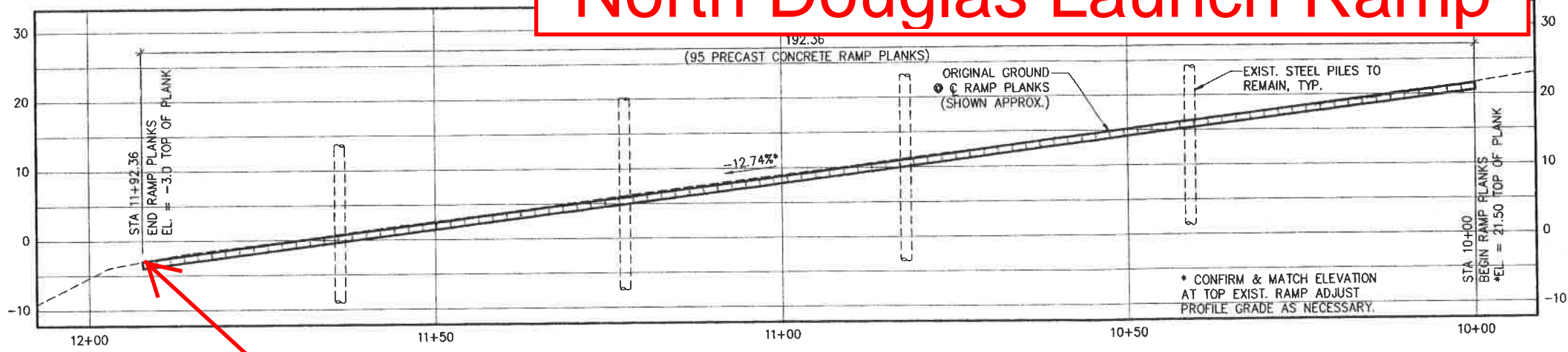


North Douglas Launch Ramp

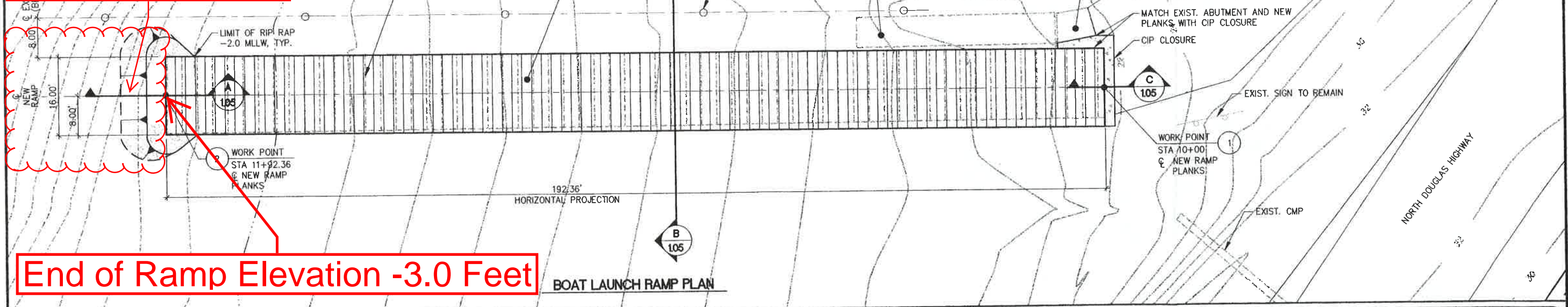


End of Ramp Elevation -3.0 Feet

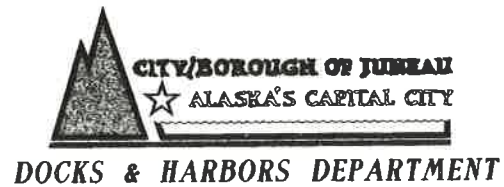
SITE LAYOUT	
DESCRIPTION	
TOP OF RAMP PLANKS	⊙ ⊕*
BOTTOM OF RAMP PLANKS	⊙ ⊕*

*NOTE: CONFIRM & MATCH BEST-FIT ALIGNMENT OF EXIST. PILES AS SHOWN

Use caution when launching at extreme low tides as the ground drops away quickly at the end of the ramp.



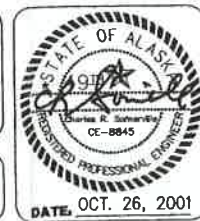
End of Ramp Elevation -3.0 Feet



REVISIONS			
DESCRIPTION	DWN.	CKD.	APP.

Peratrovich, Nottingham & Drage, Inc.
 Engineering Consultants
 3220 Hospital Drive, Suite 200
 Juneau, Alaska 99801
 TEL: (907) 586-2093 FAX: (907) 586-2099

DESIGN: JWG CHECKED: CRS SCALE: SCALE IN FEET
 DRAWN: LLR APPROVED: CRS 0 10 20 FT.



NORTH DOUGLAS BOAT RAMP AND ACCESS IMPROVEMENTS
 CONTRACT NO. E01-299

SHEET TITLE: **BOAT LAUNCH RAMP PLAN AND PROFILE**

DATE: OCT. 26, 2001

PHAD PROJECT NO. 00268.02 DWG. FILE: 1-04.DWG

1.04
SHEET 4 OF 5