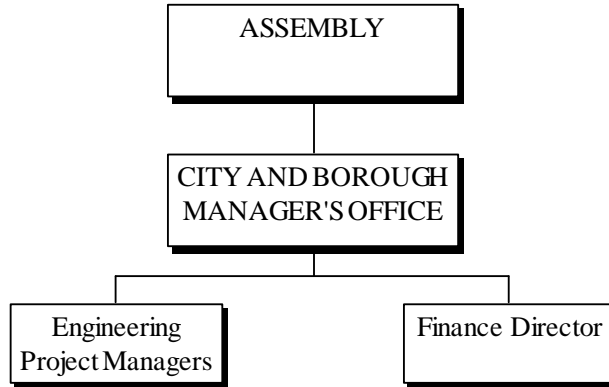


SPECIAL ASSESSMENT FUNDS – L.I.D.



Responsible For:

Processing petitions from citizens requesting an L.I.D. and developing project cost estimates.

Construction of an approved project

Responsible For:

Obtaining project funds as directed by the Assembly.

Billing benefited property owners as directed by the Assembly.

Making debt service payments.

NOTES

This page has been left for notes.

SPECIAL ASSESSMENT FUNDS – L.I.D.

Local Improvement District (L.I.D.) is a method of financing public improvements by assessing the benefiting property owners for all or part of the costs. A L.I.D. boundary is established by the Assembly and may be as large or small as necessary to accomplish the desired improvements. A L.I.D. may only be created by an ordinance and is usually initiated by a petition from the property owners.

For certain types of projects, part of the cost may be matched with City and Borough funds or with state or federal grants.

SPECIAL ASSESSMENTS

	FY10 Actuals	FY11		FY12	
		Amended Budget	Projected Actuals	Approved Budget	Adopted Budget
EXPENDITURES:					
Personnel Services	\$ 189,100	172,300	133,200	176,500	169,200
Commodities and Services	33,200	36,400	35,900	36,600	37,100
Capital Outlay	12,600	21,000	14,100	21,000	16,000
Debt Service:					
#88 W Valley Sewer III	-	-	-	-	20,900
#98 W Valley Sewer I & II	-	62,500	-	59,800	77,700
Support to:					
General Fund	15,700	28,600	28,600	19,800	14,900
Capital Transit	30,000	30,000	30,000	30,000	30,000
Wastewater	1,230,500	-	-	-	-
Total Expenditures	1,511,100	350,800	241,800	343,700	365,800
FUNDING SOURCES:					
Assessment Payments	79,200	69,300	73,100	157,300	118,400
Square Foot Add-on Fees	115,400	83,000	89,000	83,000	82,000
Penalties and Interest	20,400	20,100	20,300	36,100	25,300
Support from General Fund	12,100	-	-	-	3,700
Fund Balance (To) From	1,284,000	178,400	59,400	67,300	136,400
Total Funding Sources	\$ 1,511,100	350,800	241,800	343,700	365,800
FUND BALANCE	\$ (732,700)	(911,100)	(792,100)	(859,400)	(928,500)

SPECIAL ASSESSMENT FUNDS – L.I.D.

ASSESSMENT REVENUE

	FY12 Approved		FY12 Adopted	
	Assessment Payments	Penalty Interest	Assessment Payments	Penalty Interest
LIDS:				
#86 N Douglas Sewer	\$ 19,800	1,200	\$ 19,400	1,200
#87 Great Western Street Paving	2,300	100	2,300	100
#98 W Valley Sewer III	-	-	12,700	2,400
#89 Lemon Creek Industrial	16,500	2,900	16,500	2,900
#92 Greenwood Ave Paving	17,200	7,000	16,600	6,800
#94 W 9th St Paving	8,000	3,600	8,000	3,600
#98 W Valley Sewer I & II	93,100	21,000	42,500	8,000
#101 Fee in Lieu Parking Program	400	300	400	300
Total	157,300	36,100	118,400	25,300
FEES:				
Water & Sewer Connect Add-On	83,000	-	82,000	-
Total	\$ 83,000	-	\$ 82,000	-