

CITY & BOROUGH OF JUNEAU

THUNDER MOUNTAIN HIGH SCHOOL

BLEACHERS & PRESS BOX

CBJ Contract No. E11-242

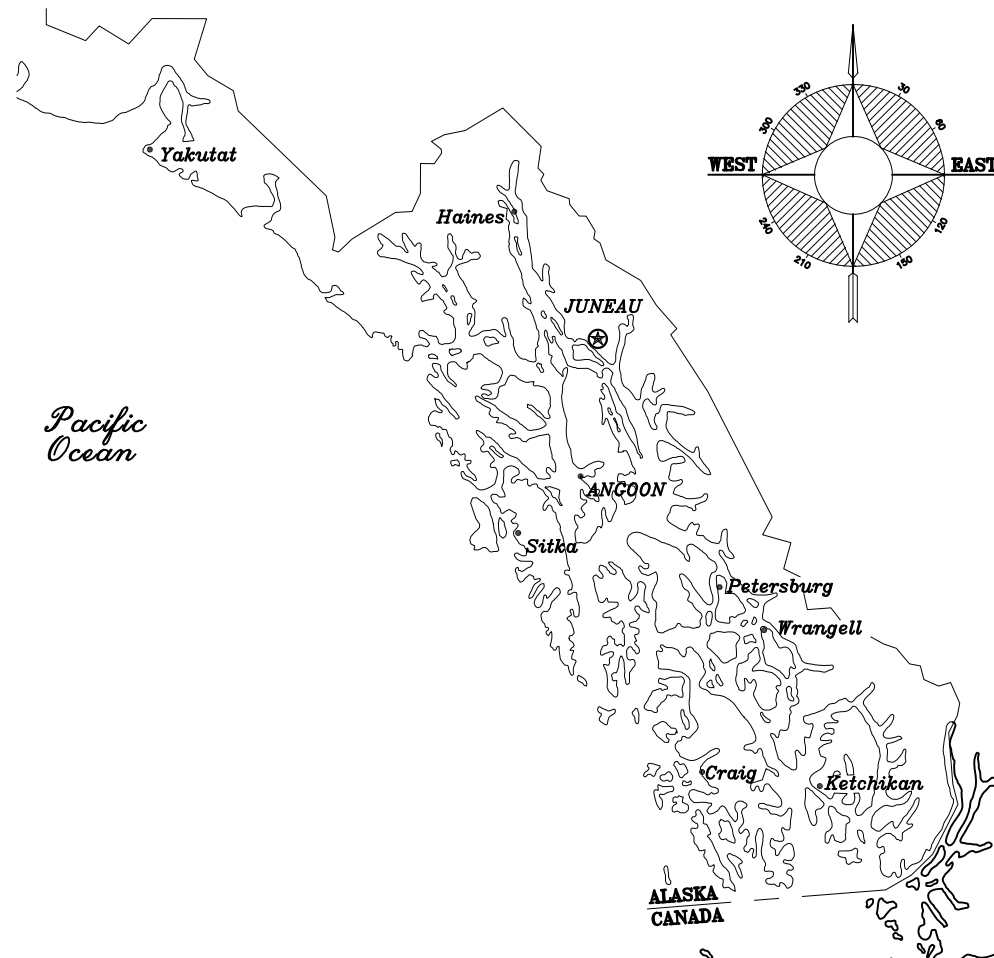
Juneau, Alaska

ARCHITECT
JENSEN YORBA LOTT, INC
 522 WEST 10TH STREET
 JUNEAU, ALASKA 99801
 (907) 586-1070
 FAX (907) 586-3959

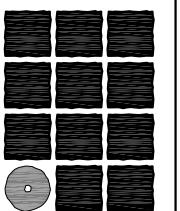
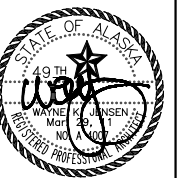
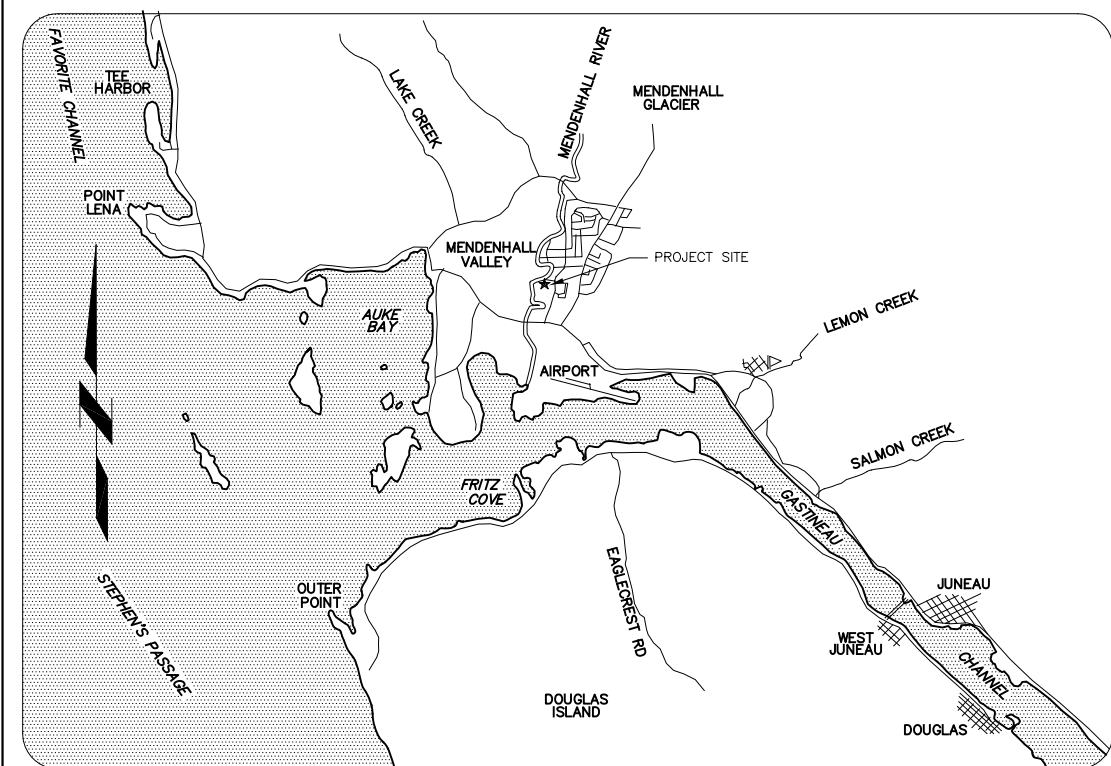
SHEET INDEX

- A001 COVER SHEET
- A101 SITE PLAN
- A201 FOUNDATION PLAN
- A202 SEATING & PRESS BOX PLAN, SECTION & ELEVATION

SOUTHEAST ALASKA MAP



JUNEAU VICINITY MAP



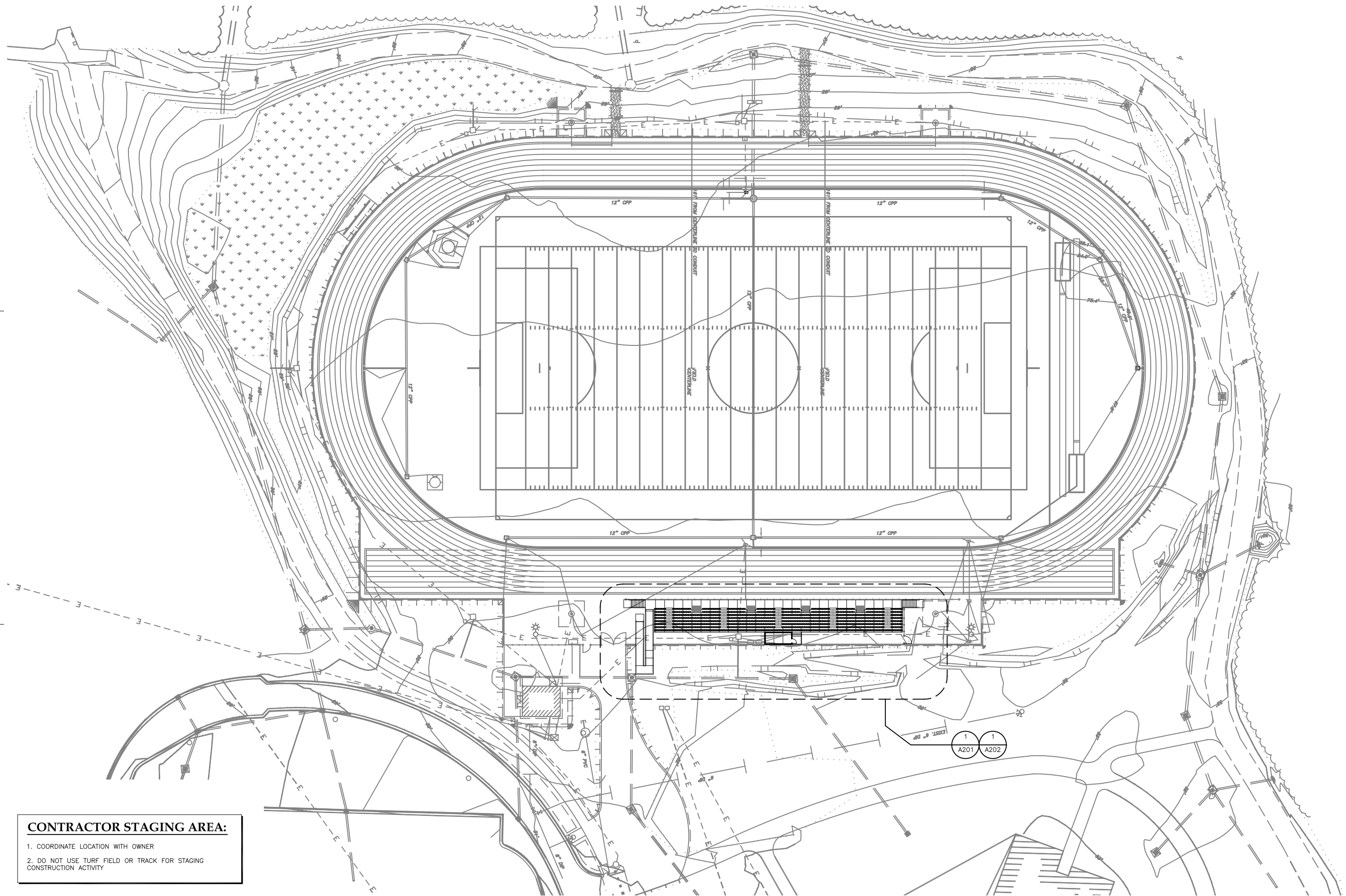
**Jensen
 Yorba
 Lott
 Inc.**

522 West 10th Street
 Juneau, Alaska 99801
 phone 907-586-1070
 fax 907-586-3959
 jensenyorbalott.com

FILE: 11008

A001

G:_Projects\11008\Cad\CDArch\A101.dwg, Layout1, 3/29/2011 9:34:39 AM, cnash, Adobe PDF 11X17.pc3, Tabloid, 1:2

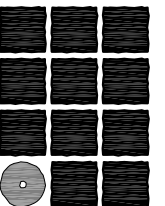


CONTRACTOR STAGING AREA:

1. COORDINATE LOCATION WITH OWNER
2. DO NOT USE TURF FIELD OR TRACK FOR STAGING CONSTRUCTION ACTIVITY

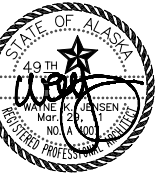
1 SITE PLAN

SCALE: 0' 15' 30' 60'



**Jensen
Yorba
Lott
Inc.**

522 West 10th Street
Juneau, Alaska 99801
phone 907-586-1070
fax 907-586-3959
jensenyorbalott.com



**CITY & BOROUGH OF JUNEAU
TMHS BLEACHERS
& PRESS BOX**
CBJ Contract No. E11-242
Juneau, Alaska

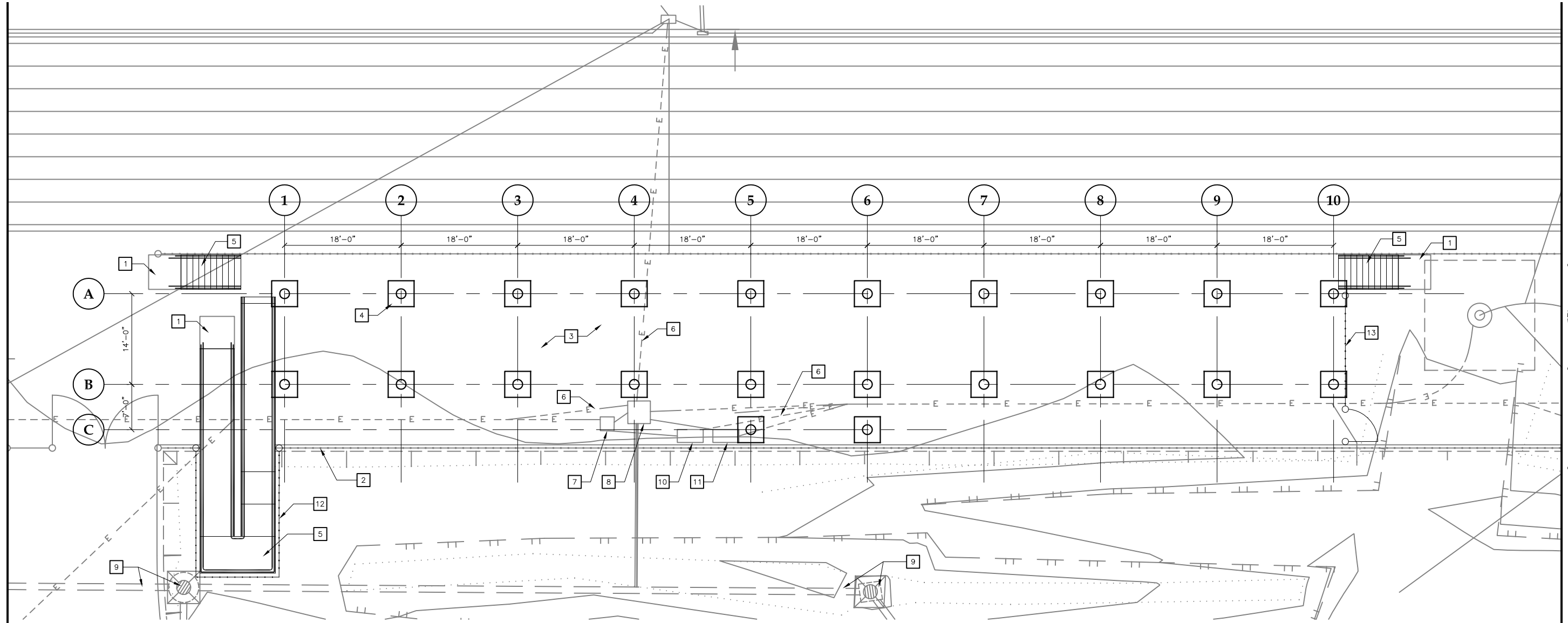
REVISIONS
△
△
△

SHEET TITLE
SITE PLAN

DATE: MARCH 2011
FILE: 11008

A101

G:_Projects\11008\Cad\CADArch\A201.dwg, Layout1, 3/29/2011 9:36:01 AM, cnash, Adobe PDF 11X17.pc3, Tabloid, 1:2



1 FOUNDATION PLAN

SCALE: 0 4' 8' 16'

KEY NOTES:

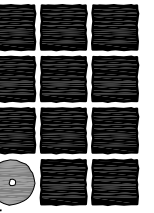
- 1 REMOVE AC PAVING - PROVIDE MIN. 5'x5' CONC LANDING. (MATCH ELEV OF ADJACENT AC)
- 2 EX FENCE - REMOVE & REINSTALL IF NEEDED ADJUST TO ACCOMMODATE RAMP
- 3 EX AC PAVING - REMOVE AS REQ FOR FOOTINGS
- 4 CONC FOOTINGS FOR BLEACHERS & PRESS BOX (TYP)
- 5 PROVIDE FOOTINGS FOR RAMP & STAIRS
- 6 EX UNDERGROUND CONDUIT - VERIFY LOCATION & COORDINATE WITH FOOTINGS
- 7 EX SIGNAL VAULT TO REMAIN - VERIFY LOCATION & COORDINATE WITH FOOTINGS
- 8 EX ELECTRICAL VAULT TO REMAIN - VERIFY LOCATION & COORDINATE WITH FOOTINGS
- 9 EX CATCH BASIN & PIPING TO REMAIN - VERIFY LOCATION & COORDINATE WITH FOOTINGS
- 10 EX SIGNAL ENCLOSURE TO REMAIN
- 11 EX POWER PANEL ENCLOSURE TO REMAIN
- 12 EXTEND CHAIN LINK RAMP GUARDRAIL TO GRADE AND CONNECT TO EX FENCE
- 13 6' HIGH CHAIN LINK FENCE W/ LOCKABLE GATE CONNECT TO EX FENCE

GENERAL NOTES:

- 1. FOOTING LOCATIONS ARE APPROXIMATE -
 -COORDINATE W/ BLEACHER & PRESS BOX DESIGN
 -COORDINATE LOCATIONS TO AVOID CONFLICTS W/
 EX UTILITIES OR SLEEVE UTILITIES THROUGH CONCRETE

**DIAL BEFORE YOU DIG!
586-1333**

U/G POWER, TELEPHONE & T.V. SHOWN ON THIS DRAWING INDICATE EXISTENCE ONLY AND DO NOT SUBSTITUTE FOR FIELD LOCATES



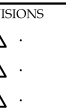
**Jensen
Yorba
Lott
Inc.**

522 West 10th Street
Juneau, Alaska 99801
phone 907-586-1070
fax 907-586-3959
jensenyorbalott.com



**CITY & BOROUGH OF JUNEAU
TMHS BLEACHERS
& PRESS BOX
CBJ Contract No. E11-242
Juneau, Alaska**

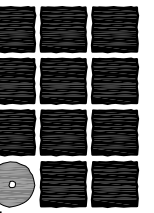
NO.	REVISIONS



SHEET TITLE
**FOUNDATION
PLAN**

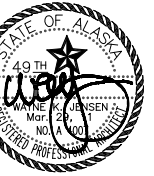
DATE: MARCH 2011
FILE: 11008

A201



**Jensen
Yorba
Lott
Inc.**

522 West 10th Street
Juneau, Alaska 99801
phone 907-586-1070
fax 907-586-3959
jensenyorbalott.com



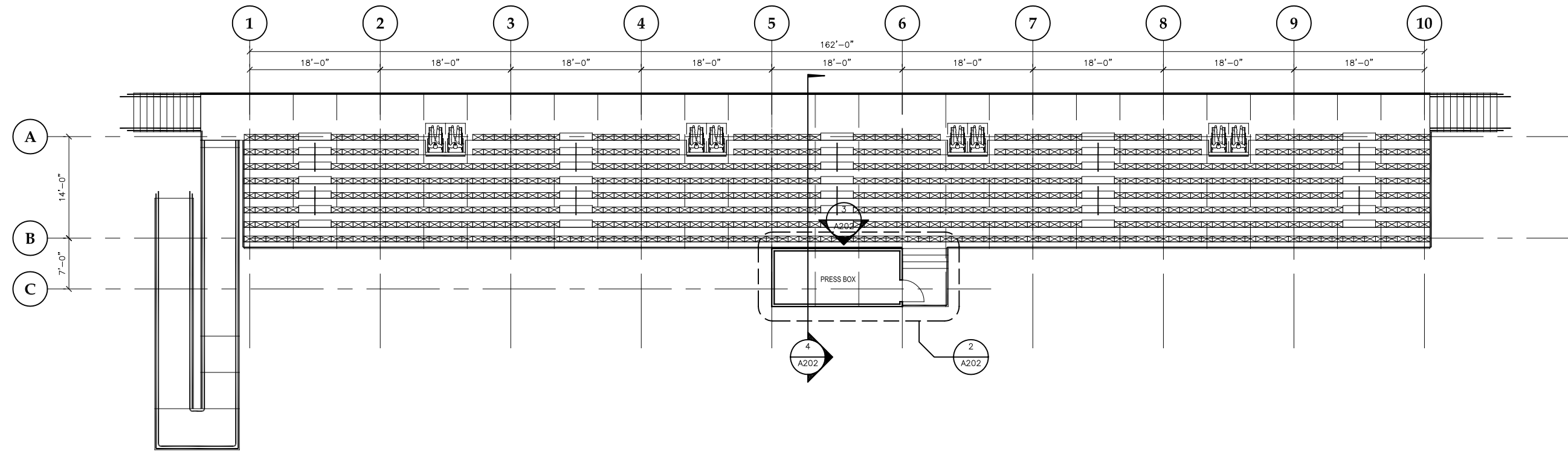
**CITY & BOROUGH OF JUNEAU
TMHS BLEACHERS
& PRESS BOX**
CBJ Contract No. E11-242
Juneau, Alaska

NO.	REVISIONS



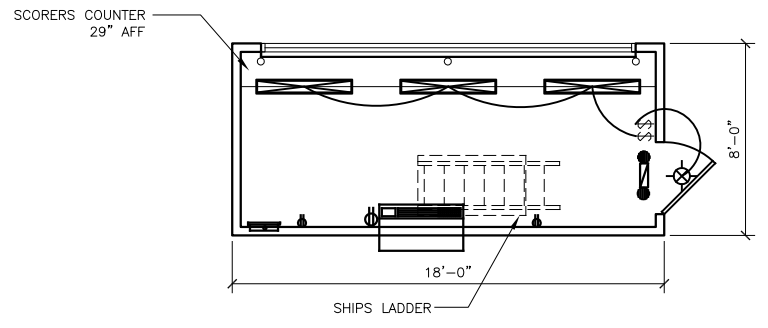
SHEET TITLE
**SEATING &
PRESS BOX
PLAN, SECTION
& ELEVATION**
DATE: MARCH 2011
FILE: 11008

A202



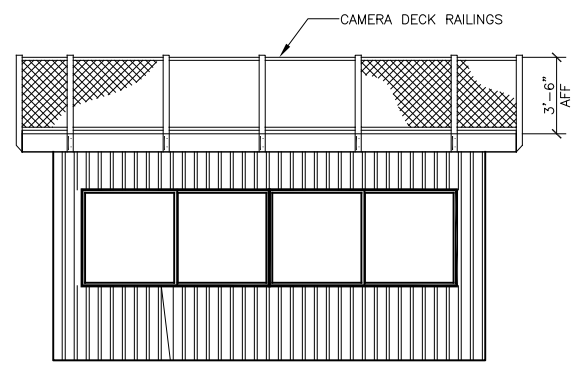
1 SEATING & PRESS BOX PLAN

SCALE: 0 4' 8' 16'



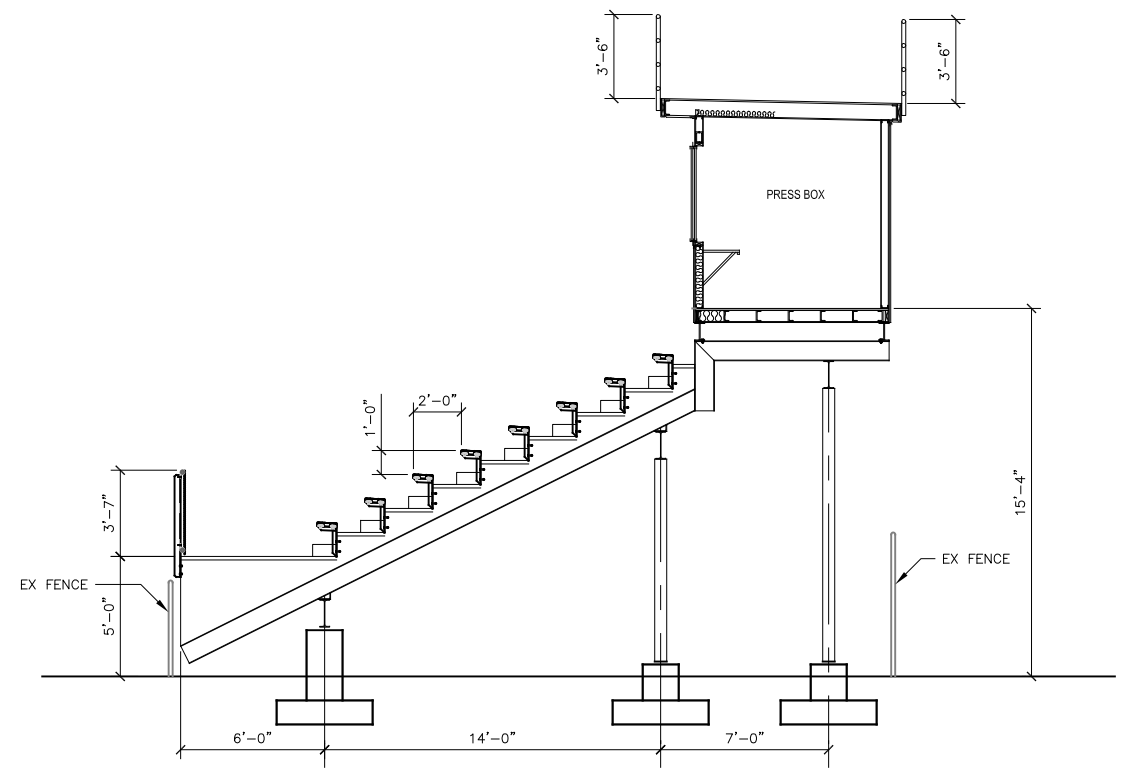
2 PRESS BOX FLOOR PLAN

SCALE: 0 4' 8' 16'



3 FRONT ELEVATION OF PRESS BOX

SCALE: 0 4' 8' 16'



4 SEATING & PRESS BOX SECTION

SCALE: 0 4' 8' 16'

G:_Projects\11008\Cad\CD\Arch\A202.dwg, Layout1, 3/29/2011 9:36:46 AM, cnash, Adobe PDF 11X17.pc3, Tabloid, 1:2